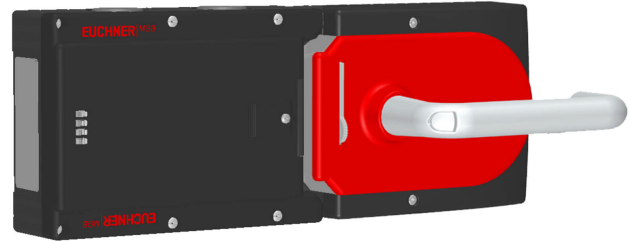


MGB-L1H-ARA-R-105782 (ORDER NO. 105782)

Locking set MGB-L1H-ARA..., (guard locking by spring force) without control or indicator

- ▶ Guard locking with guard lock monitoring
- ▶ Can be connected in series with other AR devices (e.g. CES-AR and CET-AR)
- ▶ With cable entry
- ▶ Unicode



Description

Guard locking type

MGB-L1... The locking arm is held in the locked position by spring force and is unlocked by solenoid force (closed-circuit current principle, mechanically locked).

Door stop

A mechanical door stop is permanently integrated into the evaluation module of the MGB. A marking on the stop makes adjustment easier.

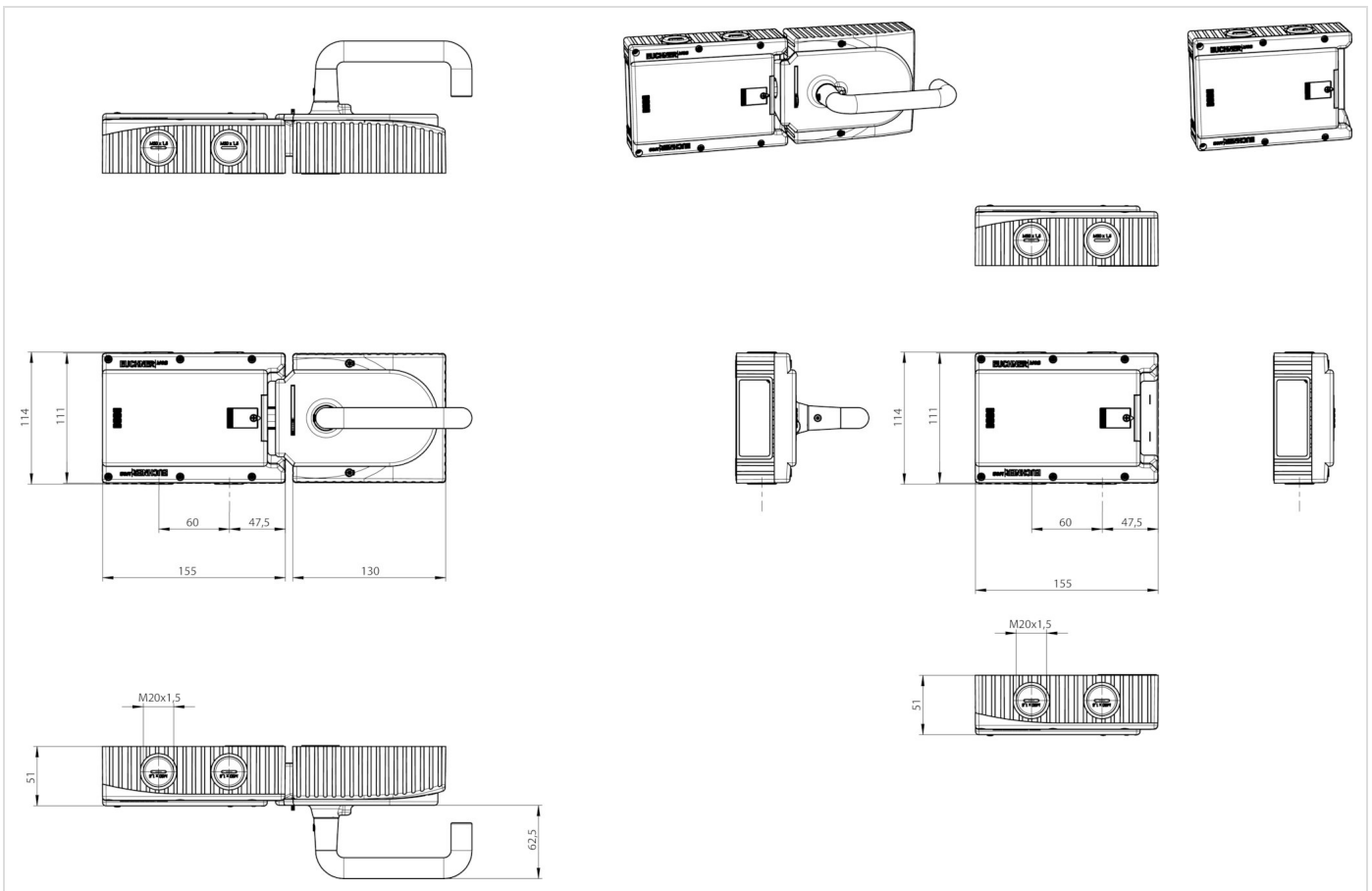
LED indicator

The LED indicator indicates all important system and status information.

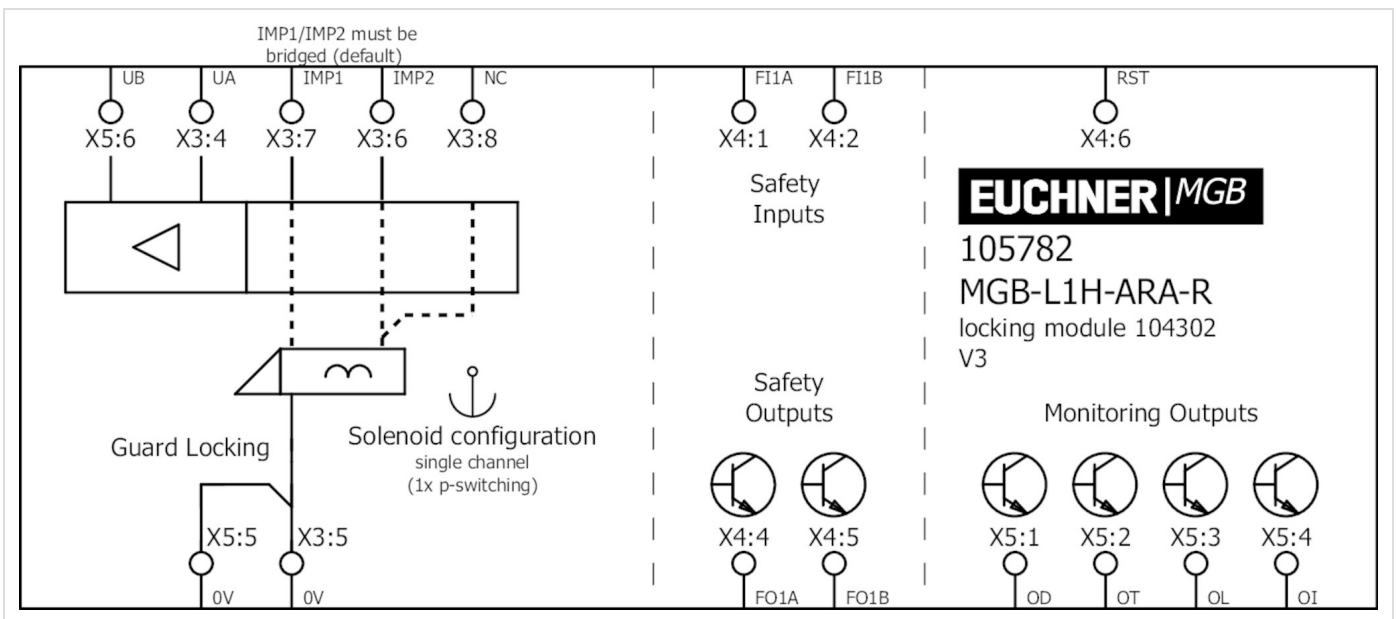
Monitoring outputs

- OD ON when the door is closed
- OT Bolt tongue inserted into the evaluation module
- OL Guard locking solenoid in locked position
- OI Diagnostics; there is a fault

Dimension drawing



Cable entry



Technical data

Locking module MGB-L1-ARA-AA1A1-M-104302 (Order no. 104302)



Mechanical values and environment

Housing material	Housing	Reinforced plastic; die-cast zinc nickel-plated, stainless steel
Weight	Net	0,75 kg
Ambient temperature	At $U_B = 24V$ DC	-20 ... 55 °C
Degree of protection		IP65
Mechanical life		1 x 10 ⁶
	In case of use as door stop, and 1 Joule impact energy	0,1 x 10 ⁶
Installation orientation		Any
Switching frequency		0,25 Hz
Connection		Cable entries M20x1.5
Guard locking principle		Closed-circuit current principle
Locking force F_{Zh}		2000 N

Electrical connection ratings

Utilization category acc. to EN 60947-5-2

	DC-13	24V 200mA (Caution: outputs must be protected with a free-wheeling diode in case of inductive loads.)
Rated insulation voltage U_i		30 V
Rated impulse withstand voltage U_{imp}		1,5 kV
Degree of contamination (external, according to EN 60947-1)		3
Connection cross-section		
	(Rigid/flexible) with cable end sleeve with collar according to DIN 46 228/1	0,25 ... 0,75 mm ²
	(Rigid/flexible) with cable end sleeve according to DIN 46 228/1	0,25 ... 1,5 mm ²
	(Rigid/flexible)	0,13 ... 1,5 mm ² ((AWG 24 ... AWG 16))
Safety class		III
Discrepancy time		
	Between FO1A and FO1B	max.10 ms
Risk time according to EN 60947-5-3		max.350 ms
Transponder coding		Unicode
		Power supply U_B
Operating voltage DC		
	U_B	24 V DC -15% ... 10% ((Reverse polarity protected, regulated, residual ripple <5%, PELV))
Current consumption		
	I_{UB}	max.80 mA ((no load on outputs))
		Power supply U_A
Operating voltage DC		
	U_A	24 V DC -15% ... 10% ((Reverse polarity protected, regulated, residual ripple <5%, PELV))
Current consumption		
	I_{UA}	max.375 mA

((With energized guard locking solenoid and unloaded outputs OD, OT, OL, OI, +20 °C, 24V))

Safety outputs F01A, F01B

Test pulses	max.1 ms
Test-pulse interval	min.100 ms
Type of output	Semiconductor outputs, p-switching, short circuit-proof
Output voltage	U_{F01A} / U_{F01B} HIGH UB-2V ... UB V DC (Value at a switching current of 50mA without taking into account the cable lengths)
	U_{F01A} / U_{F01B} LOW 0 ... 1 V DC
Output current	Per safety output F01A / F01B 1 ... 200 mA

Monitoring outputs OD, OT, OL, OI

Type of output	Semiconductor outputs, p-switching, short circuit-proof
Output voltage	UA-2V ... UA V DC (Value at a switching current of 50mA without taking into account the cable lengths)
Output current	max.50 mA

Solenoid control input IMP1, IMP2, IMM

Test pulses	max.5 ms
Test-pulse interval	min.100 ms

Other

Product version number	V4.0.0
------------------------	--------

Reliability values according to EN ISO 13849-1

Monitoring of guard locking and the safety guard position

Category	4
Performance Level	PL e
PFH _D	3.7×10^{-9}

Control of the guard locking

Category	4
Performance Level	PL e
PFH _D	2.8×10^{-9}
Mission time	20 y

Handle module MGB-H-AA1A1-R-100464 (Order no. 100464)



Mechanical values and environment

Housing material	Housing Reinforced plastic, die-cast zinc nickel-plated, stainless steel
Weight	Net 1,00 kg
Ambient temperature	-20 ... 55 °C
Degree of protection	IP65
Installation orientation	Door hinge DIN right

Other

Product version number

V3.0.0

Components



104302

Locking module MGB-L1-ARA-AA1A1-M-104302

- ▶ Guard locking with guard lock monitoring
 - ▶ Can be connected in series with other AR devices (e.g. CES-AR and CET-AR)
 - ▶ With cable entry
 - ▶ Unicode
-



100464

Handle module MGB-H-AA1A1-R-100464

- ▶ Intelligent bolt tongue
 - ▶ Lockout mechanism
 - ▶ Door handle
-

Accessories

Connection material

Built-in connector RC18

120403

MGB-A-PLUGCONNECTOR-RC18-120403

- ▶ For all MGB with cable entry

Function expansion

Door handle for MGB-H...



110277
MGB-A-DOORHANDLE-S1-110277

- ▶ Aluminum, silver anodized
- ▶ For mounting on all MGB handle modules MGB-H up to V2.0.0



123926
MGB-A-DOORHANDLE-S2-123926

- ▶ Aluminum, silver anodized
- ▶ For mounting on all MGB handle modules MGB-H from V3.0.0

Door knob for MGB-H...



111460
MGB-A-DOORKNOB-S1-111460

- ▶ Aluminum, silver anodized
- ▶ For mounting on all MGB handle modules MGB-H... up to V2.0.0
- ▶ e.g. on sliding doors



124030
MGB-A-DOORKNOB-S2-124030

- ▶ Aluminum, silver anodized
- ▶ For mounting on all MGB handle modules MGB-H... from V3.0.0
- ▶ e.g. on sliding doors

Emergency unlocking for safety system MGB



112989
MGB-A-EMERGENCYRELEASE-112989

- ▶ Quick emergency release
- ▶ sealable

Escape release MGB-E-A...



100465
MGB-E-A-100465

- ▶ Escape release from the danger zone
- ▶ Door handle signal red
- ▶ Extended actuation axis for thicker doors (available optionally)

Mounting accessories

Mounting plate for all MGB handle modules



109491
MGB-A-MOUNTINGPLATE-H-109491

- ▶ Easy and quick mounting (only two screws required)
- ▶ Quick module replacement
- ▶ Steel, powder coated
- ▶ Suitable for doors hinged on the right or left

Mounting plate for evaluation modules MGB-L.-AR.-... and MGB-L.-AP.-...



109490
MGB-A-MOUNTINGPLATE-L-109490

- ▶ Easy and quick mounting (only two screws required)
- ▶ Quick module replacement
- ▶ Steel, powder coated
- ▶ Suitable for doors hinged on the right or left

Spare parts

Handle module MGB-H-...



100464
MGB-H-AA1A1-R-100464

- ▶ Intelligent bolt tongue
- ▶ Lockout mechanism
- ▶ Door handle

Locking module MGB-L1-ARA..., (guard locking by spring force) without controls or indicators



104302
MGB-L1-ARA-AA1A1-M-104302

- ▶ Guard locking with guard lock monitoring
- ▶ Can be connected in series with other AR devices (e.g. CES-AR and CET-AR)
- ▶ With cable entry
- ▶ Unicode

Contacts

🏠 EUCHNER GmbH + Co. KG
Kohlhammerstraße 16
70771 Leinfelden-Echterdingen

☎ +49 711 7597-0

📠 +49 711 753316

✉ info(at)euchner.de